

Cleaved-SUMO-2/3 (G93) rabbit pAb

Cat#: orb763929 (Manual)

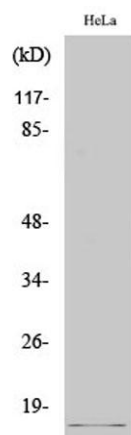
For research use only. Not intended for diagnostic use.

Product Name	Cleaved-SUMO-2/3 (G93) rabbit pAb
Host species	Rabbit
Applications	WB;ELISA;CoIP
Species Cross-Reactivity	Human;Mouse;Rat
Recommended dilutions	Western Blot: 1/500 - 1/2000. ELISA: 1/20000. IP 1:50-100 Not yet tested in other applications.
Immunogen	The antiserum was produced against synthesized peptide derived from human SUMO2/3. AA range:44-93
Specificity	Cleaved-SUMO-2/3 (G93) Polyclonal Antibody detects endogenous levels of fragment of activated SUMO-2/3 protein resulting from cleavage adjacent to G93.
Formulation	Liquid in PBS containing 50% glycerol, 0.5% BSA and 0.02% sodium azide..
Storage	Store at -20°C. Avoid repeated freeze-thaw cycles.
Protein Name	Small ubiquitin-related modifier 2
Gene Name	SUMO2
Cellular localization	Nucleus. Nucleus, PML body.
Purification	The antibody was affinity-purified from rabbit antiserum by affinity-chromatography using epitope-specific immunogen.
Clonality	Polyclonal

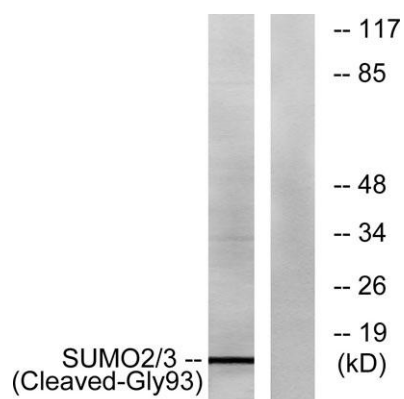
Concentration	1 mg/ml
Observed band	11kD
Human Gene ID	6613
Human Swiss-Prot Number	P61956
Alternative Names	SUMO2; SMT3A; SMT3H2; Small ubiquitin-related modifier 2; SUMO-2; HSMT3; SMT3 homolog 2; SUMO-3; Sentrin-2; Ubiquitin-like protein SMT3A; Smt3A

Background

This gene encodes a protein that is a member of the SUMO (small ubiquitin-like modifier) protein family. It functions in a manner similar to ubiquitin in that it is bound to target proteins as part of a post-translational modification system. However, unlike ubiquitin which targets proteins for degradation, this protein is involved in a variety of cellular processes, such as nuclear transport, transcriptional regulation, apoptosis, and protein stability. It is not active until the last two amino acids of the carboxy-terminus have been cleaved off. Numerous pseudogenes have been reported for this gene. Alternate transcriptional splice variants, encoding different isoforms, have been characterized. [provided by RefSeq, Jul 2008],



Western Blot analysis of various cells using Cleaved-SUMO-2/3 (G93) Polyclonal Antibody



Western blot analysis of lysates from HeLa cells, using SUMO2/3 (Cleaved-Gly93) Antibody. The lane on the right is blocked with the synthesized peptide.