

CD24 rabbit pAb

Cat#: orb767280 (Manual)

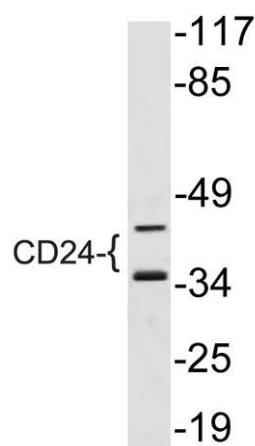
For research use only. Not intended for diagnostic use.

Product Name	CD24 rabbit pAb
Host species	Rabbit
Applications	WB;ELISA
Species Cross-Reactivity	Human;Mouse;Rat
Recommended dilutions	Western Blot: 1/500 - 1/2000. ELISA: 1/10000. Not yet tested in other applications.
Immunogen	The antiserum was produced against synthesized peptide derived from human CD24. AA range:14-63
Specificity	CD24 Polyclonal Antibody detects endogenous levels of CD24 protein.
Formulation	Liquid in PBS containing 50% glycerol, 0.5% BSA and 0.02% sodium azide..
Storage	Store at -20°C. Avoid repeated freeze-thaw cycles.
Protein Name	Signal transducer CD24
Gene Name	CD24
Cellular localization	Cell membrane; Lipid-anchor, GPI-anchor.
Purification	The antibody was affinity-purified from rabbit antiserum by affinity-chromatography using epitope-specific immunogen.
Clonality	Polyclonal

Concentration	1 mg/ml
Observed band	35,45kD
Human Gene ID	100133941
Human Swiss-Prot Number	P25063
Alternative Names	CD24; CD24A; Signal transducer CD24; Small cell lung carcinoma cluster 4 antigen; CD antigen CD24

Background

This gene encodes a sialoglycoprotein that is expressed on mature granulocytes and B cells and modulates growth and differentiation signals to these cells. The precursor protein is cleaved to a short 32 amino acid mature peptide which is anchored via a glycosyl phosphatidylinositol (GPI) link to the cell surface. This gene was missing from previous genome assemblies, but is properly located on chromosome 6. Non-transcribed pseudogenes have been designated on chromosomes 1, 15, 20, and Y. Alternative splicing results in multiple transcript variants. [provided by RefSeq, Apr 2014],



Western blot analysis of lysate from NIH/3T3 cells, using CD24 antibody.