

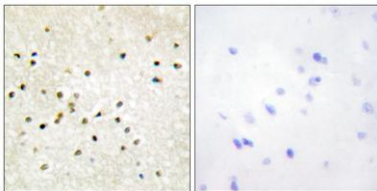
TFIIH p62 rabbit pAb**Cat#: orb768562 (Manual)**

For research use only. Not intended for diagnostic use.

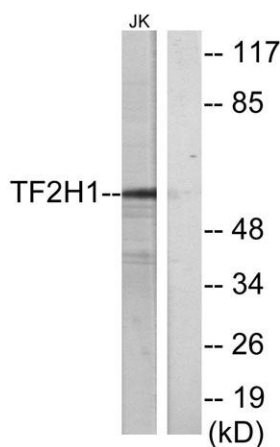
Product Name	TFIIH p62 rabbit pAb
Host species	Rabbit
Applications	WB;IHC;IF;ELISA
Species Cross-Reactivity	Human;Mouse
Recommended dilutions	Western Blot: 1/500 - 1/2000. Immunohistochemistry: 1/100 - 1/300. ELISA: 1/20000. Not yet tested in other applications.
Immunogen	The antiserum was produced against synthesized peptide derived from human TF2H1. AA range:15-64
Specificity	TFIIH p62 Polyclonal Antibody detects endogenous levels of TFIIH p62 protein.
Formulation	Liquid in PBS containing 50% glycerol, 0.5% BSA and 0.02% sodium azide..
Storage	Store at -20°C. Avoid repeated freeze-thaw cycles.
Protein Name	General transcription factor IIH subunit 1
Gene Name	GTF2H1
Cellular localization	Nucleus.
Purification	The antibody was affinity-purified from rabbit antiserum by affinity-chromatography using epitope-specific immunogen.
Clonality	Polyclonal

Explore. Bioreagents.

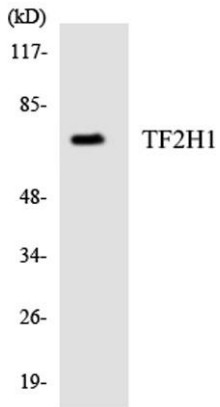
Concentration	1 mg/ml
Observed band	57kD
Human Gene ID	2965
Human Swiss-Prot Number	P32780
Alternative Names	GTF2H1; BTF2; General transcription factor IIIH subunit 1; Basic transcription factor 2 62 kDa subunit; BTF2 p62; General transcription factor IIIH polypeptide 1; TFIIH basal transcription factor complex p62 subunit
Background	function:Component of the core-TFIIH basal transcription factor involved in nucleotide excision repair (NER) of DNA and, when complexed to CAK, in RNA transcription by RNA polymerase II.,PTM:Phosphorylated.,similarity:Contains 2 BSD domains.,subunit:One of the six subunits forming the core-TFIIH basal transcription factor. Interacts with PUF60.,



Immunohistochemistry analysis of paraffin-embedded human brain tissue, using TF2H1 Antibody. The picture on the right is blocked with the synthesized peptide.



Western blot analysis of lysates from Jurkat cells, using TF2H1 Antibody. The lane on the right is blocked with the synthesized peptide.



Western blot analysis of the lysates from HepG2 cells using TF2H1 antibody.