

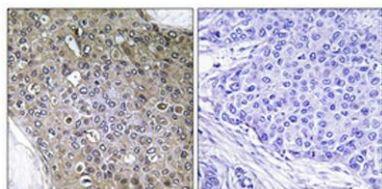
TGFβ RIII (phospho Thr842) rabbit pAb**Cat#: orb770255 (Manual)**

For research use only. Not intended for diagnostic use.

Product Name	TGFβ RIII (phospho Thr842) rabbit pAb
Host species	Rabbit
Applications	IHC;IF;ELISA
Species Cross-Reactivity	Human;Mouse;Rat
Recommended dilutions	Immunohistochemistry: 1/100 - 1/300. Immunofluorescence: 1/200 - 1/1000. ELISA: 1/5000. Not yet tested in other applications.
Immunogen	The antiserum was produced against synthesized peptide derived from human TGF beta Receptor III around the phosphorylation site of Thr842. AA range:801-850
Specificity	Phospho-TGFβ RIII (T842) Polyclonal Antibody detects endogenous levels of TGFβ RIII protein only when phosphorylated at T842.
Formulation	Liquid in PBS containing 50% glycerol, 0.5% BSA and 0.02% sodium azide..
Storage	Store at -20°C. Avoid repeated freeze-thaw cycles.
Protein Name	Transforming growth factor beta receptor type 3
Gene Name	TGFBR3
Cellular localization	Secreted. Secreted, extracellular space. Cell membrane ; Single-pass type I membrane protein . Exists both as a membrane-bound form and as soluble form in serum and in the extracellular matrix.
Purification	The antibody was affinity-purified from rabbit antiserum by affinity-chromatography using epitope-specific immunogen.

Clonality	Polyclonal
Concentration	1 mg/ml
Observed band	
Human Gene ID	7049
Human Swiss-Prot Number	Q03167
Alternative Names	TGFBR3; Transforming growth factor beta receptor type 3; TGF-beta receptor type 3; TGFR-3; Betaglycan; Transforming growth factor beta receptor III; TGF-beta receptor type III

Background This locus encodes the transforming growth factor (TGF)-beta type III receptor. The encoded receptor is a membrane proteoglycan that often functions as a co-receptor with other TGF-beta receptor superfamily members. Ectodomain shedding produces soluble TGFBR3, which may inhibit TGFB signaling. Decreased expression of this receptor has been observed in various cancers. Alternatively spliced transcript variants encoding different isoforms have been identified for this gene.[provided by RefSeq, Sep 2010],



Immunohistochemical analysis of paraffin-embedded Human breast cancer. Antibody was diluted at 1:100(4° overnight). High-pressure and temperature Tris-EDTA,pH8.0 was used for antigen retrieval. Negative ctrl (right) obtained from antibody was pre-absor