

BTF3 rabbit pAb**Cat#: orb773249 (Manual)**

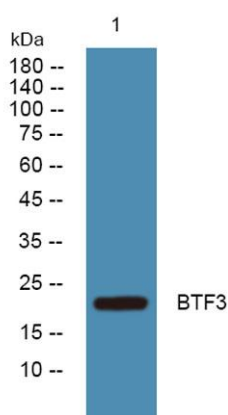
For research use only. Not intended for diagnostic use.

Product Name	BTF3 rabbit pAb
Host species	Rabbit
Applications	WB;ELISA
Species Cross-Reactivity	Human;Mouse
Recommended dilutions	WB 1:500-2000 ELISA 1:5000-20000
Immunogen	Synthesized peptide derived from human protein . at AA range: 120-200
Specificity	BTF3 Polyclonal Antibody detects endogenous levels of protein.
Formulation	Liquid in PBS containing 50% glycerol, and 0.02% sodium azide..
Storage	Store at -20°C. Avoid repeated freeze-thaw cycles.
Protein Name	Transcription factor BTF3 (RNA polymerase B transcription factor 3)
Gene Name	BTF3 NACB OK/SW-cl.8
Cellular localization	Cytoplasm . Nucleus . The heterodimer with NACA is cytoplasmic.
Purification	The antibody was affinity-purified from rabbit antiserum by affinity-chromatography using epitope-specific immunogen.
Clonality	Polyclonal

Concentration	1 mg/ml
Observed band	22kD
Human Gene ID	689
Human Swiss-Prot Number	P20290
Alternative Names	

Background

This gene encodes the basic transcription factor 3. This protein forms a stable complex with RNA polymerase IIB and is required for transcriptional initiation. Alternative splicing results in multiple transcript variants encoding different isoforms. This gene has multiple pseudogenes. [provided by RefSeq, Jul 2008],



Western blot analysis of lysates from A431 cells, primary antibody was diluted at 1:1000, 4° over night